



# MONTHLY MEMBERSHIP PROGRESS REPORT

District 5M 2

Results as of: 11/30/2018

GMT: MICHAEL MOLEND A

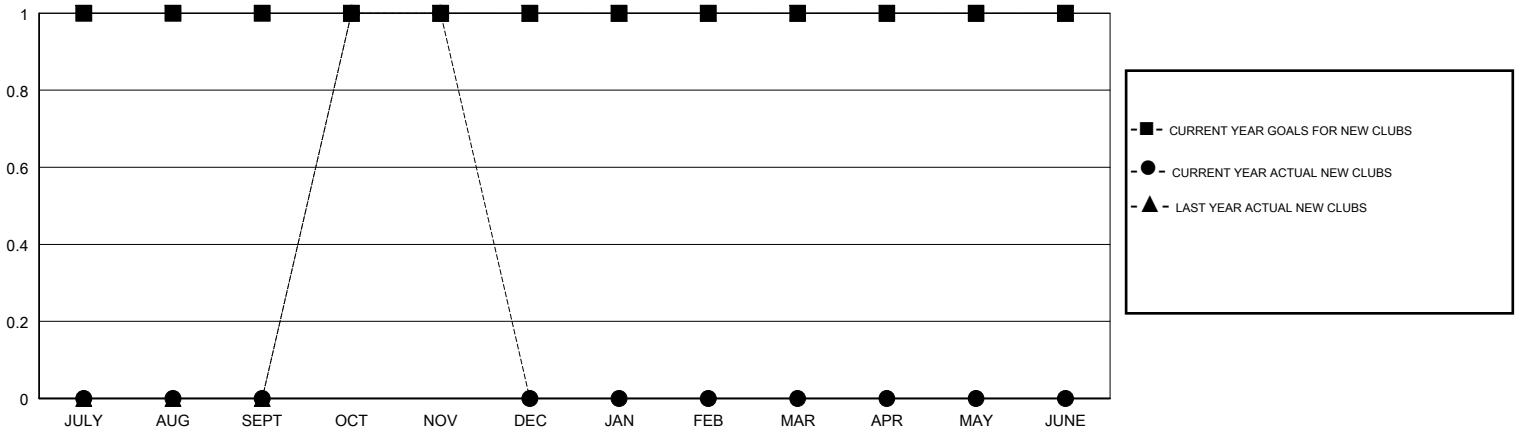
LOCATION MINNESOTA

GMT CA

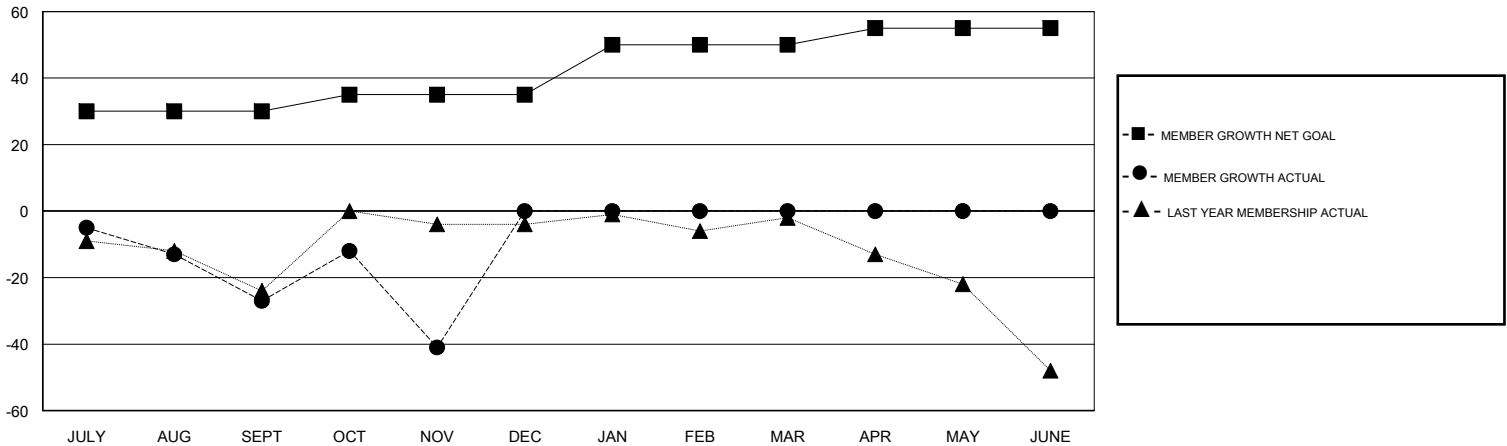
Clubs			
RESULTS FOR 2018-2019			
QUARTER	NEW CLUB GOAL	NEW CLUBS	DROPPED CLUBS
JULY/AUG/SEPT	1	0	0
OCT/NOV/DEC	0	1	0
JAN/FEB/MAR	0	0	0
APR/MAY/JUNE	0	0	0

Members			
RESULTS FOR 2018-2019			
QUARTER	MEMBER GROWTH NET GOAL	MEMBER GROWTH ACTUAL	DROPPED MEMBERS ACTUAL (including transfers)
JULY/AUG/SEPT	30	26	46
OCT/NOV/DEC	5	51	64
JAN/FEB/MAR	15	0	0
APR/MAY/JUNE	5	0	0

GOALS AND ACTUAL NEW CLUBS CUMULATIVE



GOALS AND ACTUAL MEMBERS CUMULATIVE



DROPPED CLUBS: 0
------------------

21 CLUBS OF 66 ADDED 1 OR MORE NEW MEMBERS

GENDER DISTRIBUTION	
MALE	1,672 (70.16%)
FEMALE	711 (29.84%)
Women Percentage Fiscal Year Goal: 30%	

DROPPED MEMBERS	
DECEASED	20
CLUB CANCELLED	0
OTHER	90
<b>TOTAL</b>	<b>110</b>

[CLICK HERE FOR CUMULATIVE MEMBERSHIP DATA](#)

TOTAL FAMILY UNIT MEMBERS	405
FAMILY MEMBERS PAYING HALF DUES	204